

MINTHIS



MINTHIS

RESORT

Perched on a tranquil hilltop among five million square metres of breathtakingly beautiful protected Cypriot landscape lies Minthis. From golf to fine dining, wellness, nature and adventure, this authentic residential retreat redefines holistic living.

The luxury boutique Suites and world-class facilities including our social heart The Plateia, sports ground and unique Wellness Spa will be open by Summer 2020.

The resort is part of a protected Natura 2000 site, in the heart of a wine producing region. Just ten minutes outside the city of Pafos, Minthis is surrounded by quaint traditional villages, providing an authentic experience of Cyprus.

LOCATION

Cyprus is a country blessed. Rich in heritage and culture as it is in natural beauty, this incomparable country boasts sandy beaches and snow-capped mountains, ancient legends and archaeological wonders, quaint villages and vibrant towns. Here, you can enjoy over 300 days of sunshine a year and the famed generosity of spirit will see you sharing stories and making memories. With record years for tourism attracting an ever- growing numbers of tourists, there has never been a better time to visit Cyprus.

GETTING THERE

- 10 minutes to town centre
- 20 minutes to nearest beach
- 20 minutes to Paphos Airport
- 90 minutes to Larnaka Airport



MINTHISRESORT.COM

Tsada, PO Box 62085, 8060 Pafos, Cyprus T +357 26 842 222, E info@minthisresort.com



MINTHIS

LUXURY ACCOMODATION



MINTHIS



THE SUITES

Capturing the life and soul of Minthis, The Suites are contemporary 2-bedroom apartments located steps away from world-class amenities including The Plateia, Wellness Spa, Golf Course and Clubhouse.

- 44 two-bedroom suites
- 104 sqm - 120 sqm
- Ground floor and first floor designs
- Disabled access and parking
- Master bedroom with king size or twin beds and ensuite bathroom
- Second bedroom with queen or twin beds
- Luxurious spacious interiors
- Expansive private verandas
- Picturesque golf and mountain views
- Room and laundry service
- Communal pool and gardens
- Concierge service
- Children's playground
- Free wi-fi
- Hairdryer
- Smart TV with satellite channels
- Handmade natural toiletries
- Towels, bath robes and slippers
- Fully equipped kitchen with tea and coffee making facilities

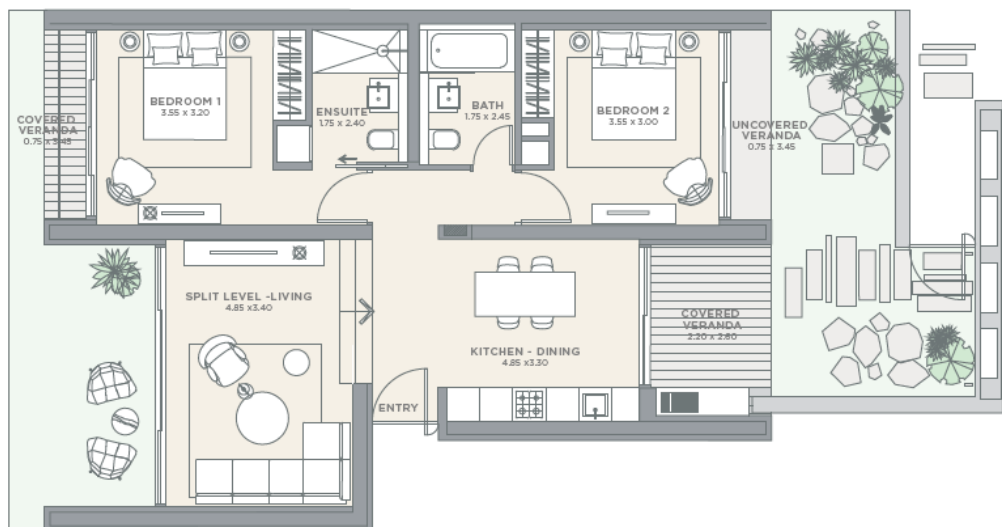
MINTHISRESORT.COM

Tsada, PO Box 62085, 8060 Pafos, Cyprus T +357 26 842 222, E info@minthisresort.com

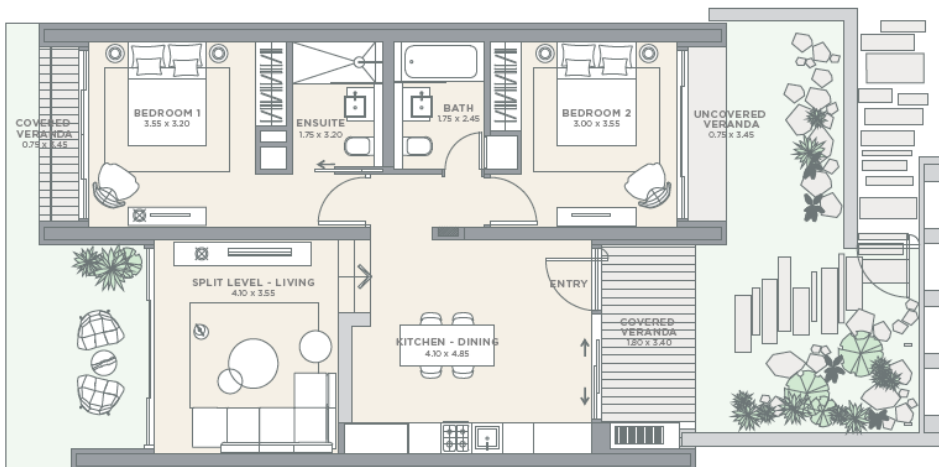
MINTHIS

- Ground floor Suites - 2 designs
- Private gardens
- Large verandas
- 2 bedrooms
- Ensuite bathroom
- Living room
- Fully equipped kitchen
- Maximum occupancy 4 persons
 - Additional cots and beds available upon request
- From 106 sqm

MELIAE



MINTHE



MINTHIS

First floor Suites - 2 designs

2 bedrooms

Living room

Large covered verandas

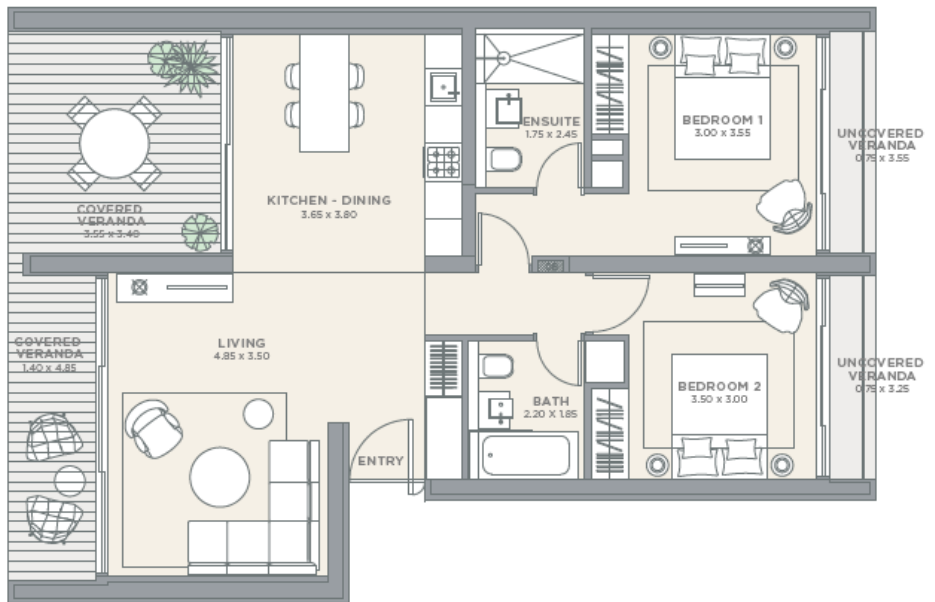
Ensuite bathroom

Fully equipped kitchen

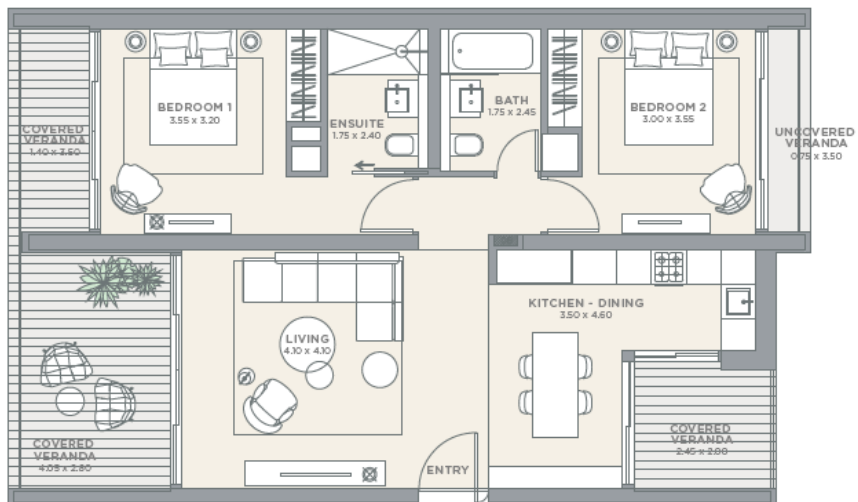
Maximum occupancy 4 persons

- Additional cots and beds available upon request
- From 104sqm

MELIADES



MENTHA



MINTHIS
HOSPITALITY, ART AND TRADITION



MINTHIS



LIFE AT THE RESORT

Evoking traditional Cypriot life, the beautifully open and contemporary dining options have been designed for an immersive experience with panoramic picture perfect views and local natural produce at the heart of the Mediterranean inspired dishes.

- Clubhouse restaurant, café and bar
- Events and wedding venue
- 12th Century Monastery with courtyard

The Plateia includes;

- Lounge Restaurant with Souvlaki grill and wood fired pizza oven
 - 100 person capacity
- Infusions Bar
 - 60 person capacity
- Wine Cava
- Home concept store
- Art Gallery and boutique store
- Grocer and delicatessen
- Children's playground and crèche
- Reception and concierge

MINTHISRESORT.COM

Tsada, PO Box 62085, 8060 Pafos, Cyprus T +357 26 842 222, E info@minthisresort.com

MINTHIS

RECONNECT AND REJUVENATE



MINTHIS



WELLNESS SPA

The ground-breaking 2,000sqm Wellness Spa at Minthis is a place to relax and unwind, offering a 360-degree holistic approach to physical wellbeing and spiritual balance. Harnessing the naturally restorative air and earth, the wellness philosophy integrates therapeutic essential oils and aromatherapy from indigenous herbs and plants found on the Minthis estate.

FACILITIES

- Studios centering on wet and dry therapies
 - Hydrotherapy pool
 - Sauna and steam room
 - 25m heated indoor pool
 - Scented baths
 - Private reflection courtyards
 - Central sensory courtyard
 - State of the art gym
 - Yoga deck
 - Treatment rooms
- all in low-lying Pavilions overlooking the peaceful Troodos mountains.

MINTHISRESORT.COM

Tsada, PO Box 62085, 8060 Pafos, Cyprus T +357 26 842 222, E info@minthisresort.com

MINTHIS

NATURE, ADVENTURE AND DISCOVERY





BALANCING RELAXATION, SPORTS AND ADVENTURE

Minthis is an idyllic retreat set amid five million square metres of rolling hills ancient olive groves and fragrant orchards. As part of a Natura 2000 protected site, nature is an ever present element, Here you can explore winding nature trails by foot or on horse back, spend times on the 18-hole championship golf course or practice your game of choice at the sports ground.

FACILITIES

- 18-hole championship golf course
- Driving range and full practice facilities
- Nature trail part of E4 European Walking route
- 12th Century Monastery - Stavros Tis Minthis
- Sports ground including
 - 6 tennis courts
 - Mini football pitch
 - Multi functional court
 - Refreshment pavilion
 - Children's activity playground
- Outdoor Gym
- Equestrian Centre
- Star-gazing point
- Bird Watching
- Vineyard allotments
- Mountain bike paths
- Wellness Spa, Gym, 25m Indoor heated pool and Yoga deck
- Herb and Botanical Gardens



MINTHISRESORT.COM

Tsada, PO Box 62085, 8060 Pafos, Cyprus T +357 26 842 222, E info@minthisresort.com